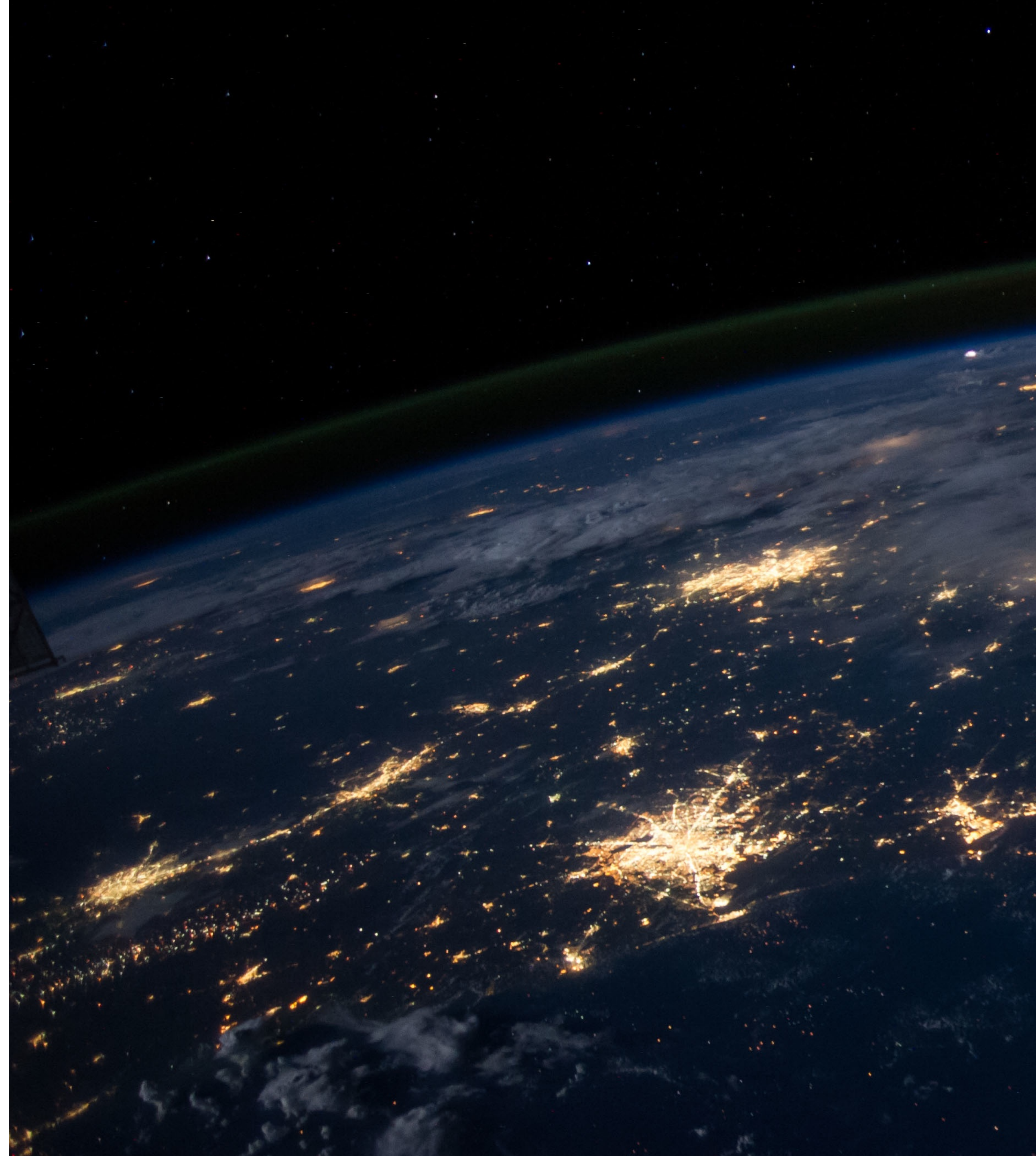




The 2018 Election, Explained in 13 Charts

Updated November 2018



What Changed Since 2016

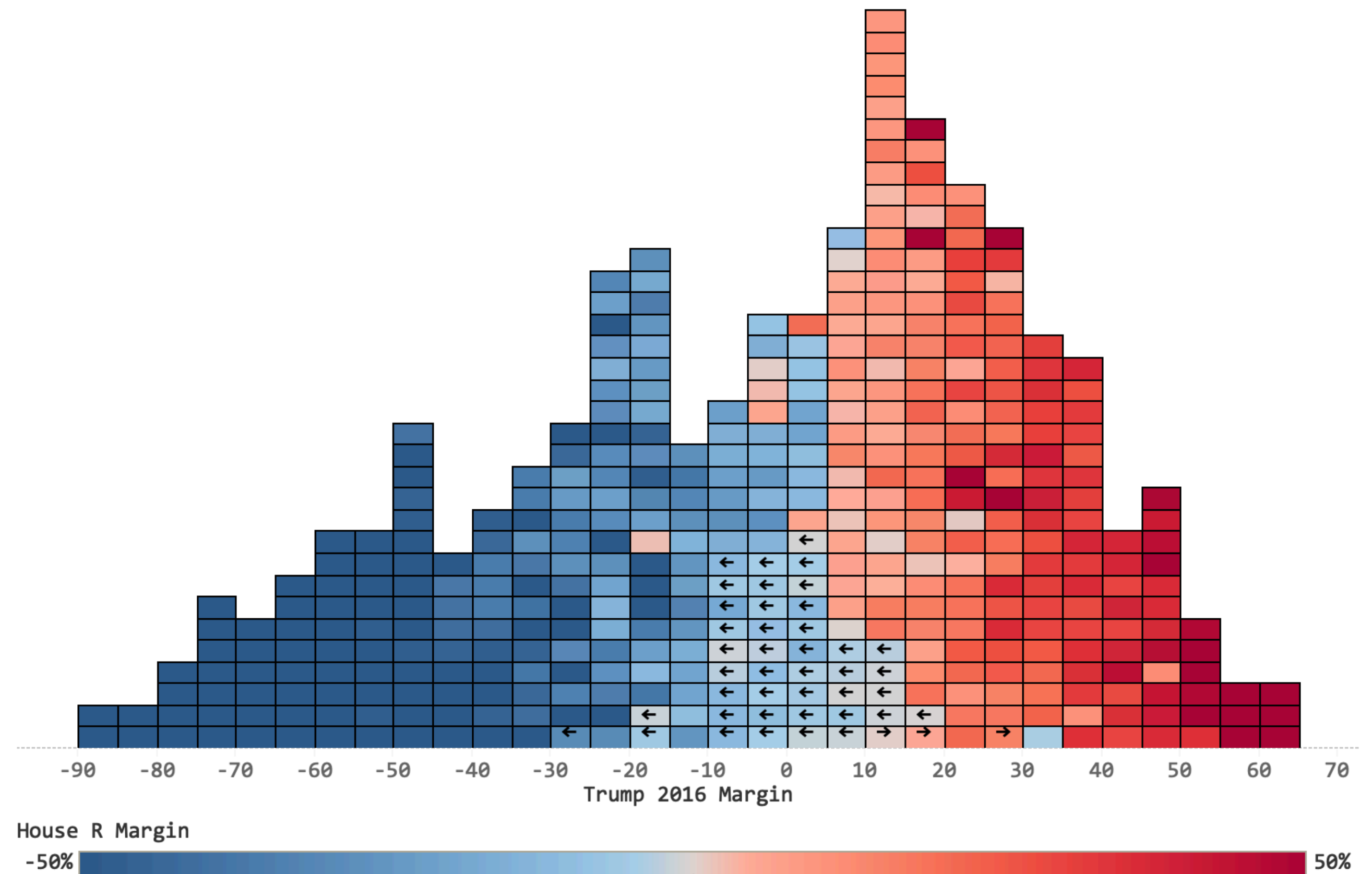


2016 Predicts 2018

- The 2018 House elections were the 2016 Presidential election redux — but the baseline was shifted 5-6 points to the left.
- Democrats won 19 of 23 GOP-held Clinton districts, with one race uncalled. **They also won 18 of 20 seats Trump carried by 5 points or less.**

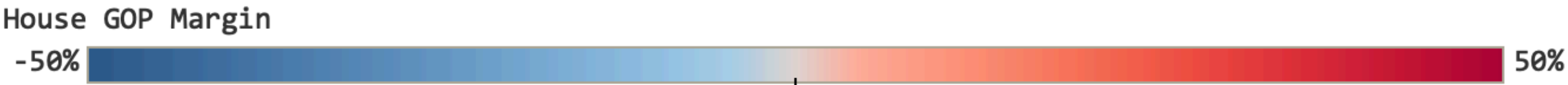
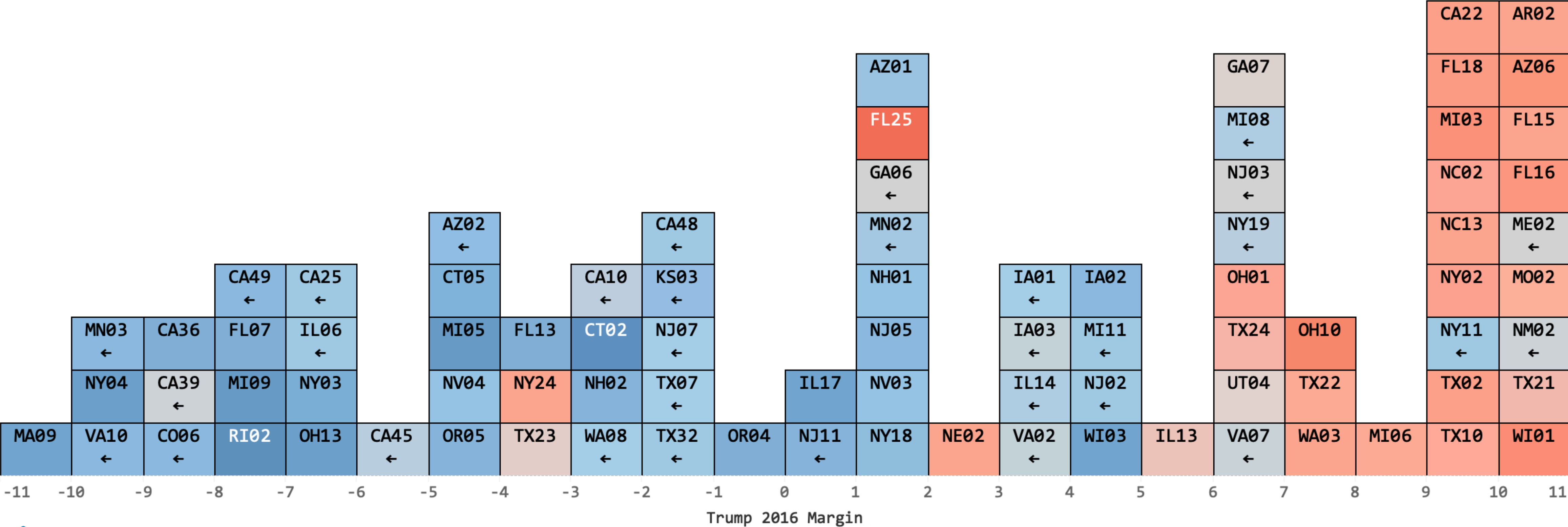


2018 House Results by 2016 Presidential Results



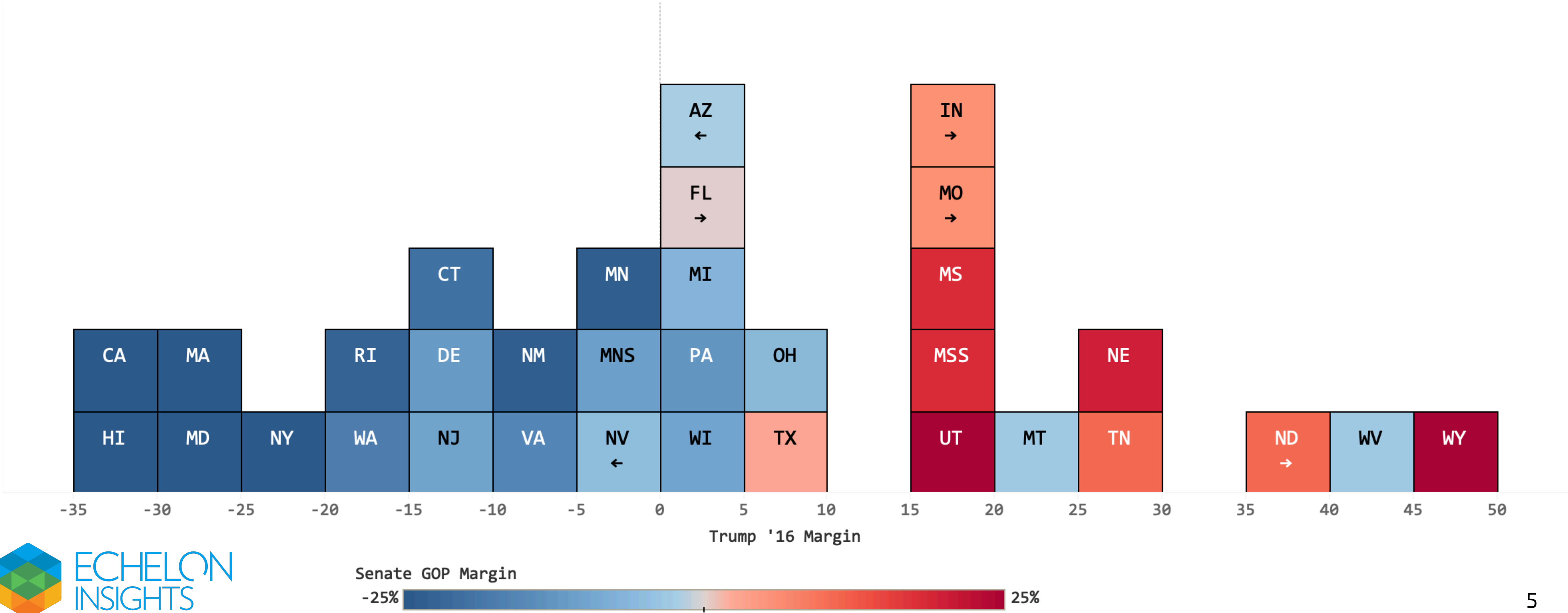
The Blue Wave Crested to Trump +6 Seats

2018 House Results by 2016 Presidential Results In Close 2016 Districts



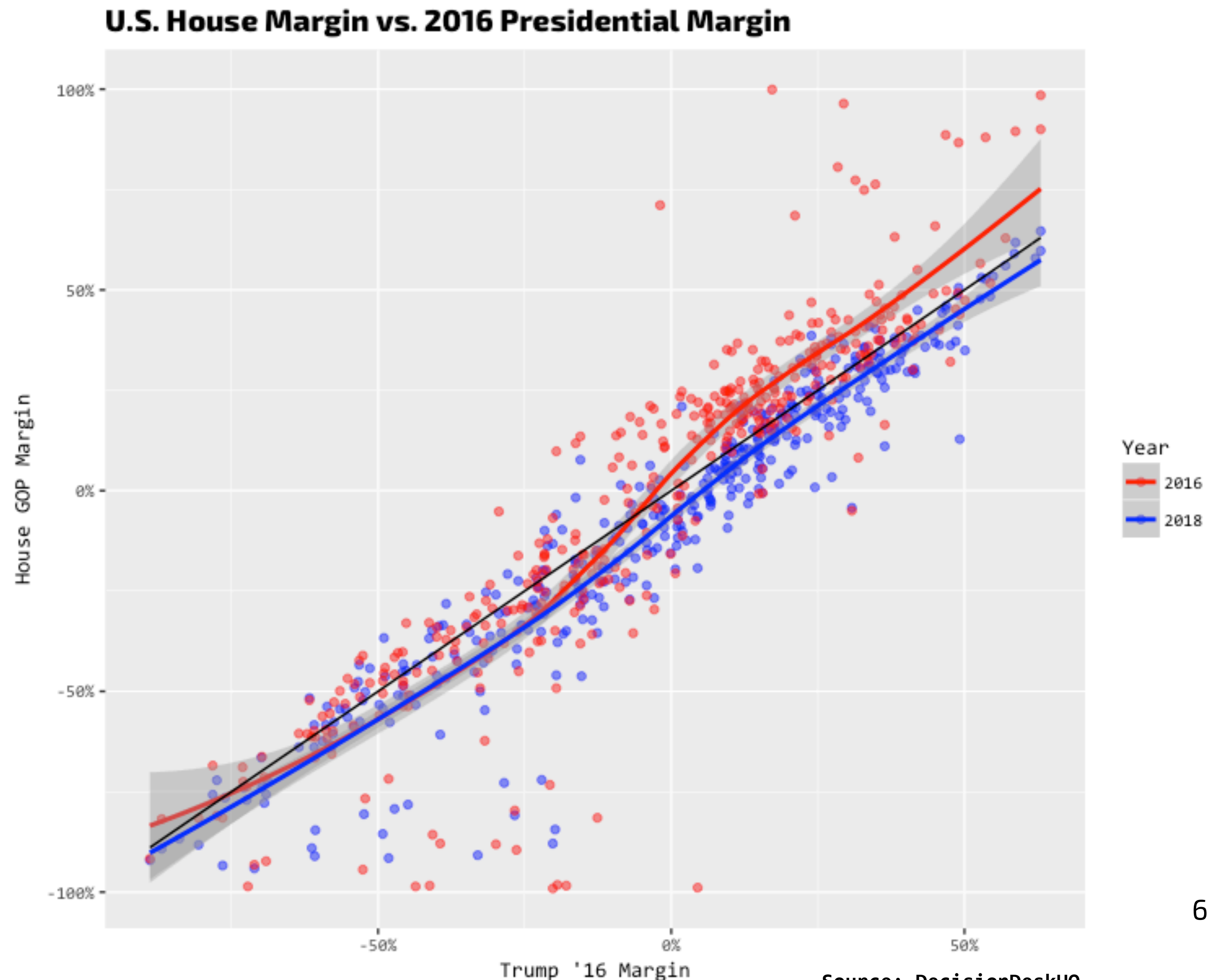
Partisan Split Drives GOP Senate Gains

2018 Senate Results by 2016 Presidential Results
Excluding Maine & Vermont



No More Separation from Trump

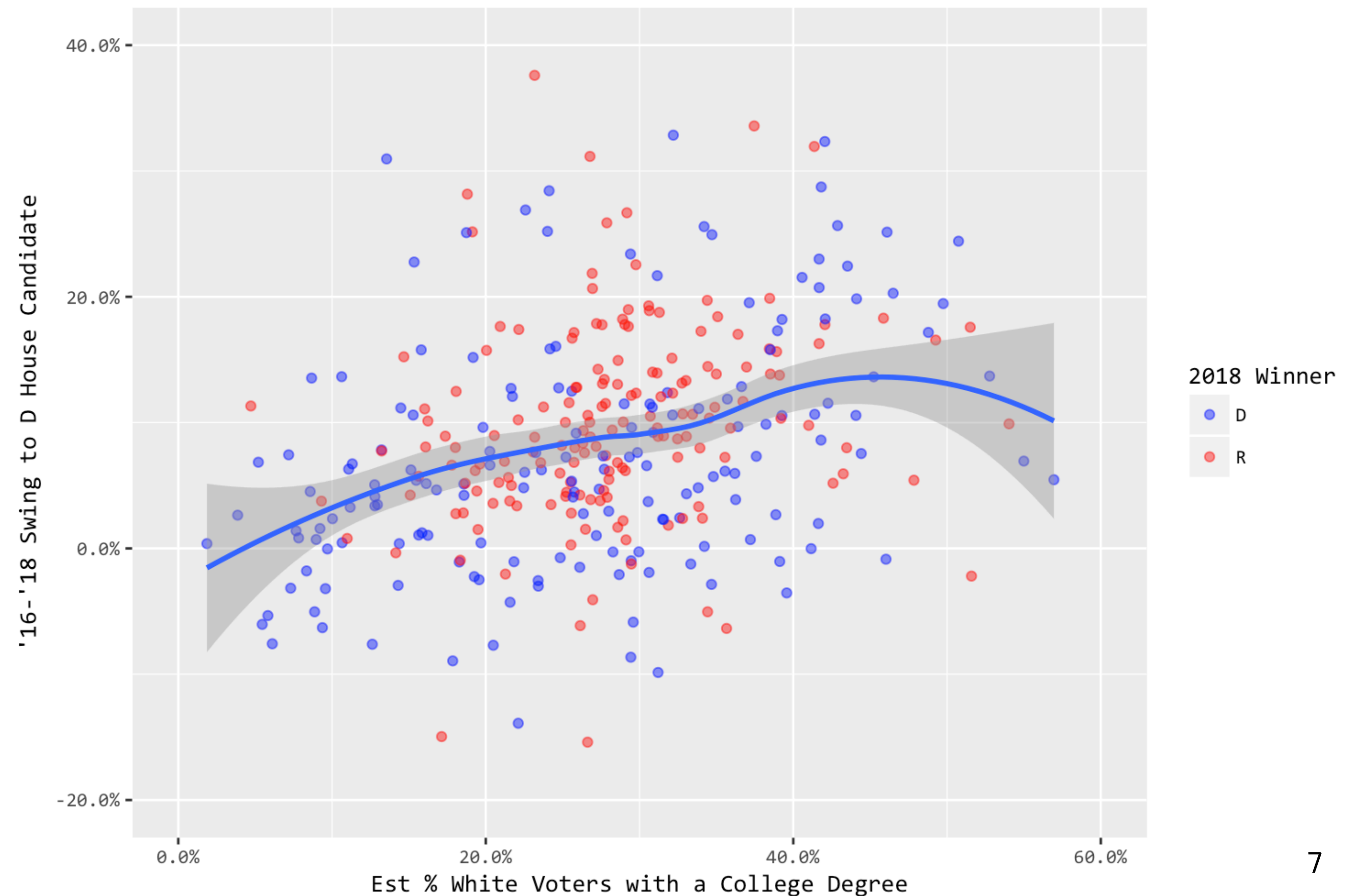
- **2016 redrew the map of Congressional politics.** This year's House races were more closely correlated to the Presidential results than 2016's House races.
- In 2016, Republicans incumbents and those in swing districts outperformed Trump. In 2018, they underperformed him uniformly in all types of districts.



The 2018 House Map: Divided by Education

- Because the House map so closely mirrored trends at the Presidential level, House results this year broke along the educational lines we saw emerge in the 2016 presidential race.
- Democratic House candidates gained the most in the districts with a large share of white voters with college degrees.

College Whites Swung to House Democrats



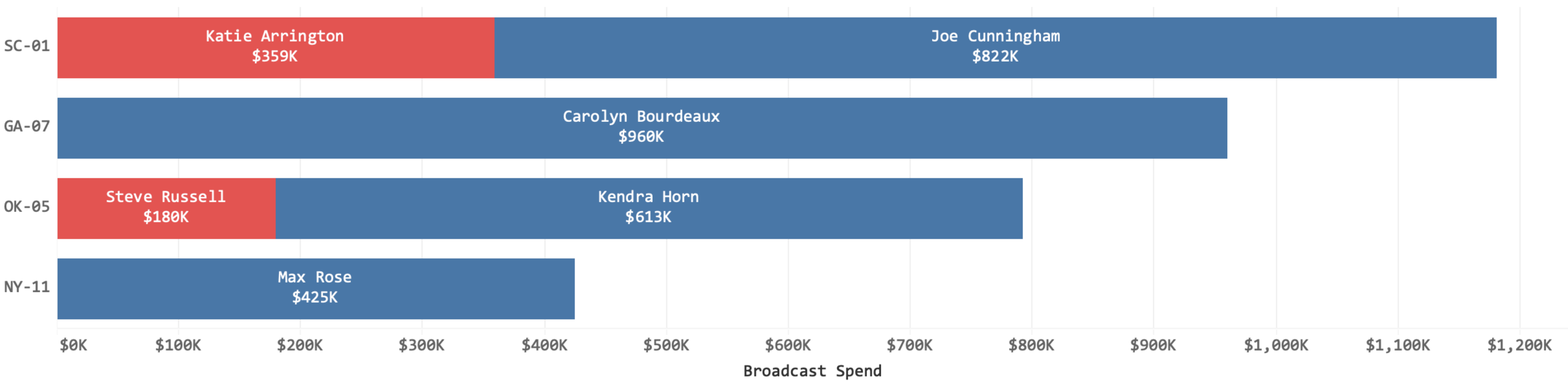
Source: DecisionDeskHQ & US Census

Democrats Dominated the Airwaves in Upset Seats

A financial boost from small-dollar donors allowed Democrats to launch last minute sneak attacks in Republican-leaning seats not thought likely to flip. In these districts, they outgunned Republicans on the airwaves in the last week and scored key upsets.

General Election Broadcast TV Spending in Surprise Seats

Favoring the D/R Candidates



Result

D Pickup

Recount

D Pickup

D Pickup

Source: Echelon Insights / Insights On Air



Turnout Trends



Forecasting Turnout: Expect a 2020 Record

- This was the first time more than 100 million people voted in a midterm election. The turnout rate was the highest since 1914.
- Midterm turnout tends to predict Presidential election turnout. Time-series forecasting suggests an eye-popping 2020 turnout rate **between 63 and 69 percent — or 148 to 160 million votes.**
- The modern record is 63.8% in 1960.

U.S. Voter Turnout

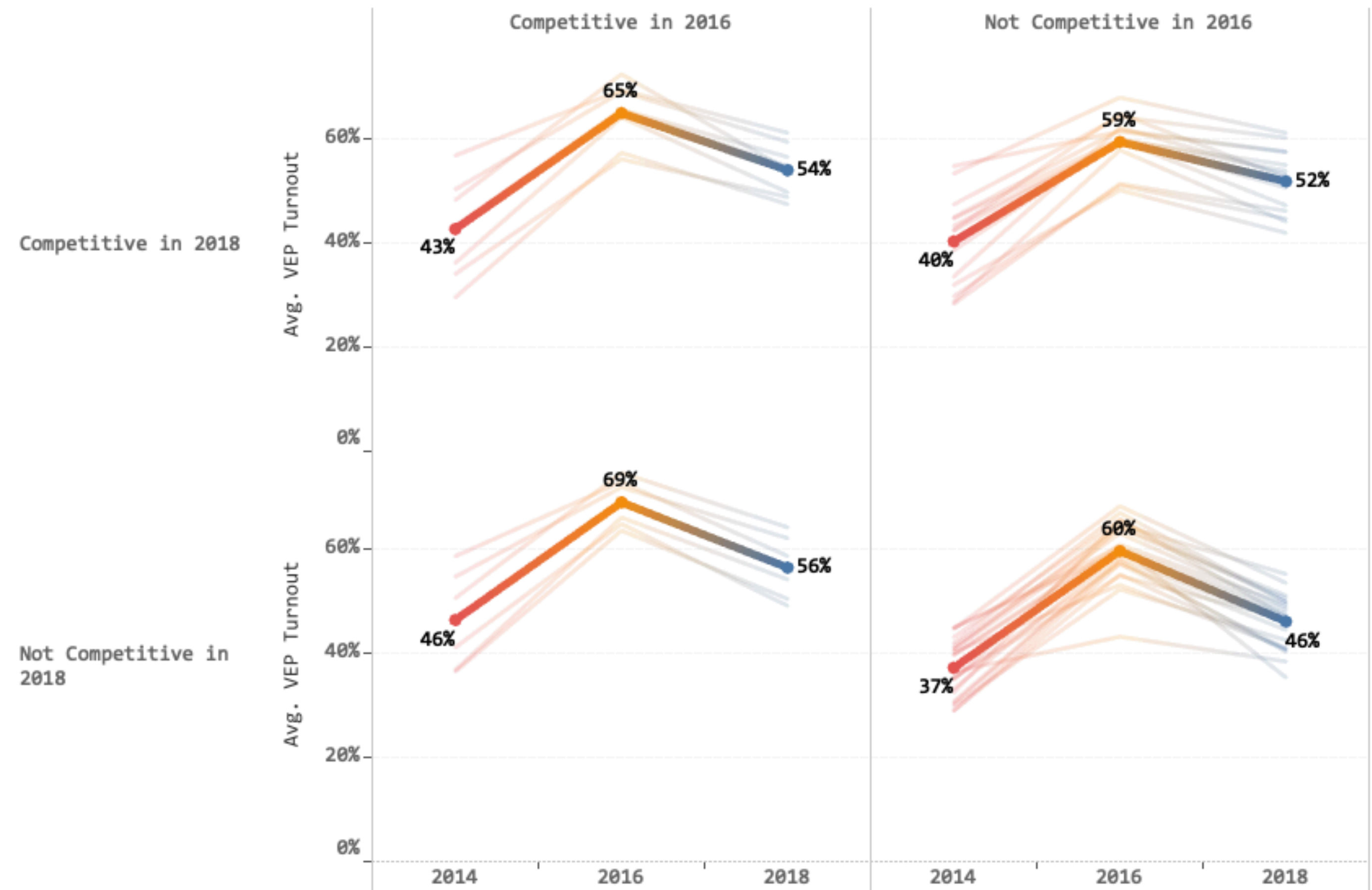
Among the Voting Eligible Population (VEP)



Forecasting Turnout: Competition Drives Voting

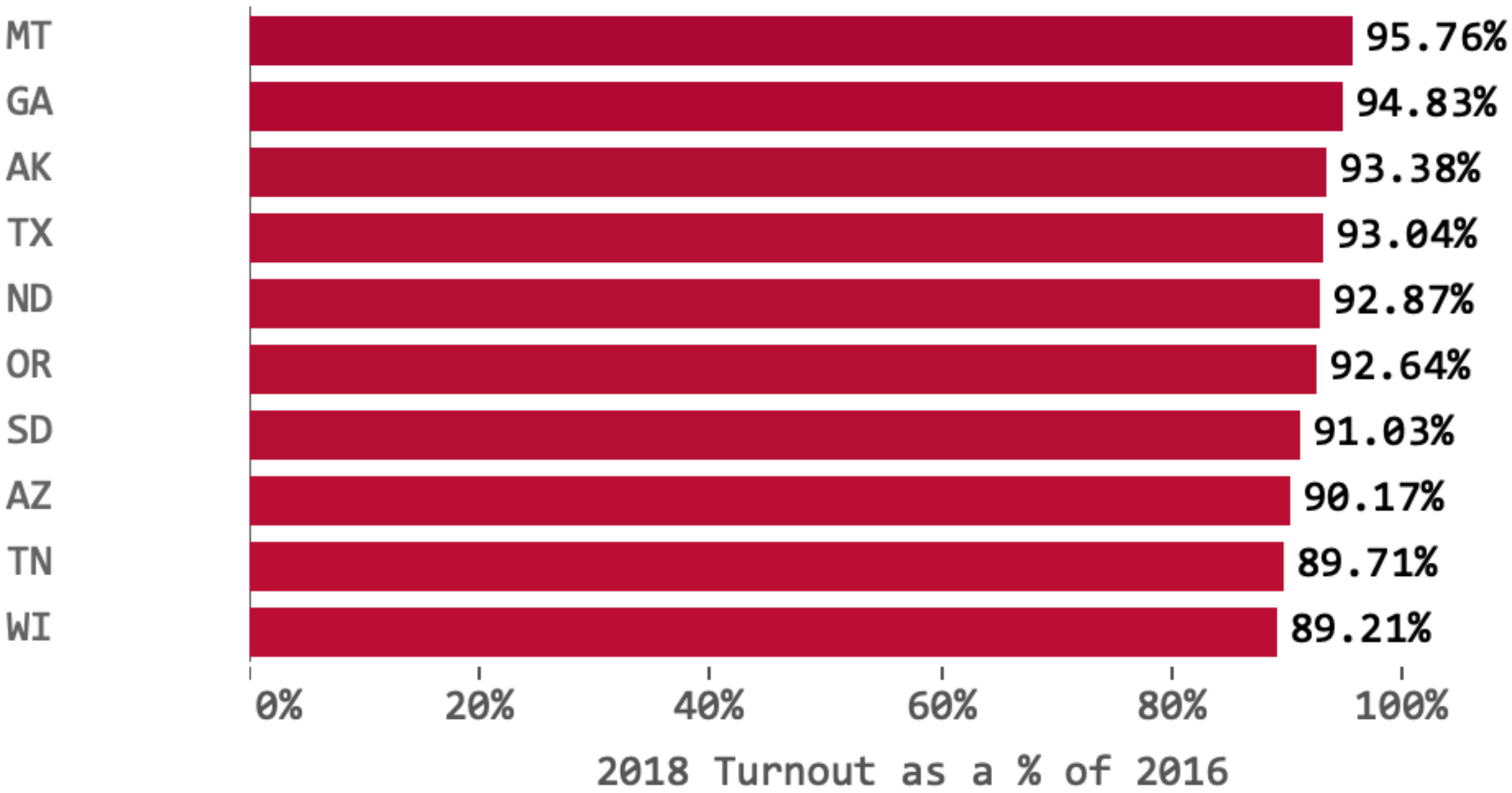
- Turnout was up all across the country from 2014, but came closest to reaching Presidential levels in newly competitive states.

VEP Turnout by State Competitiveness in 2018

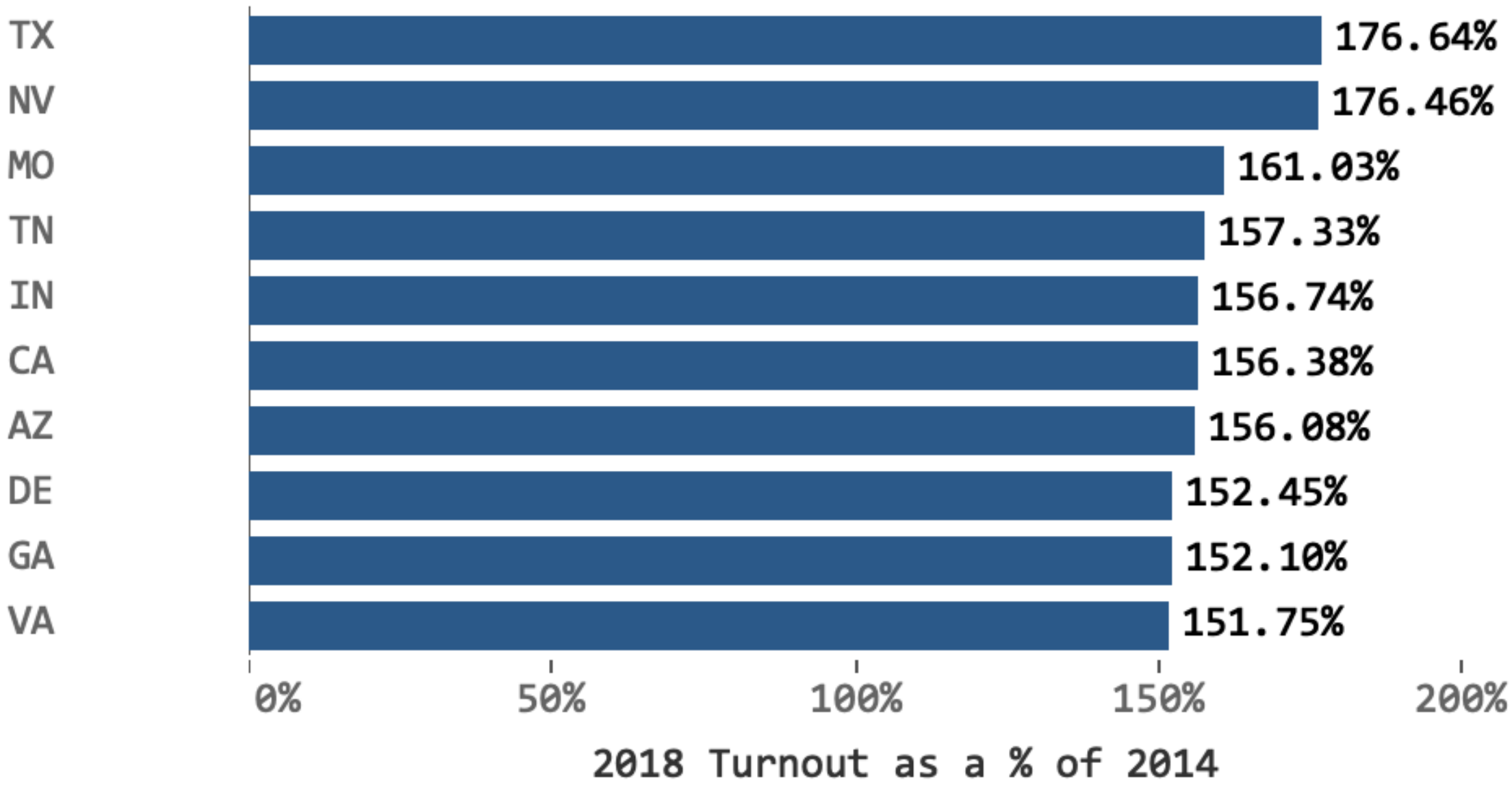


Montana, Georgia, Alaska, Texas Nearly Match Presidential Turnout Rates

2018 Turnout vs. 2016



2018 Turnout vs. 2014

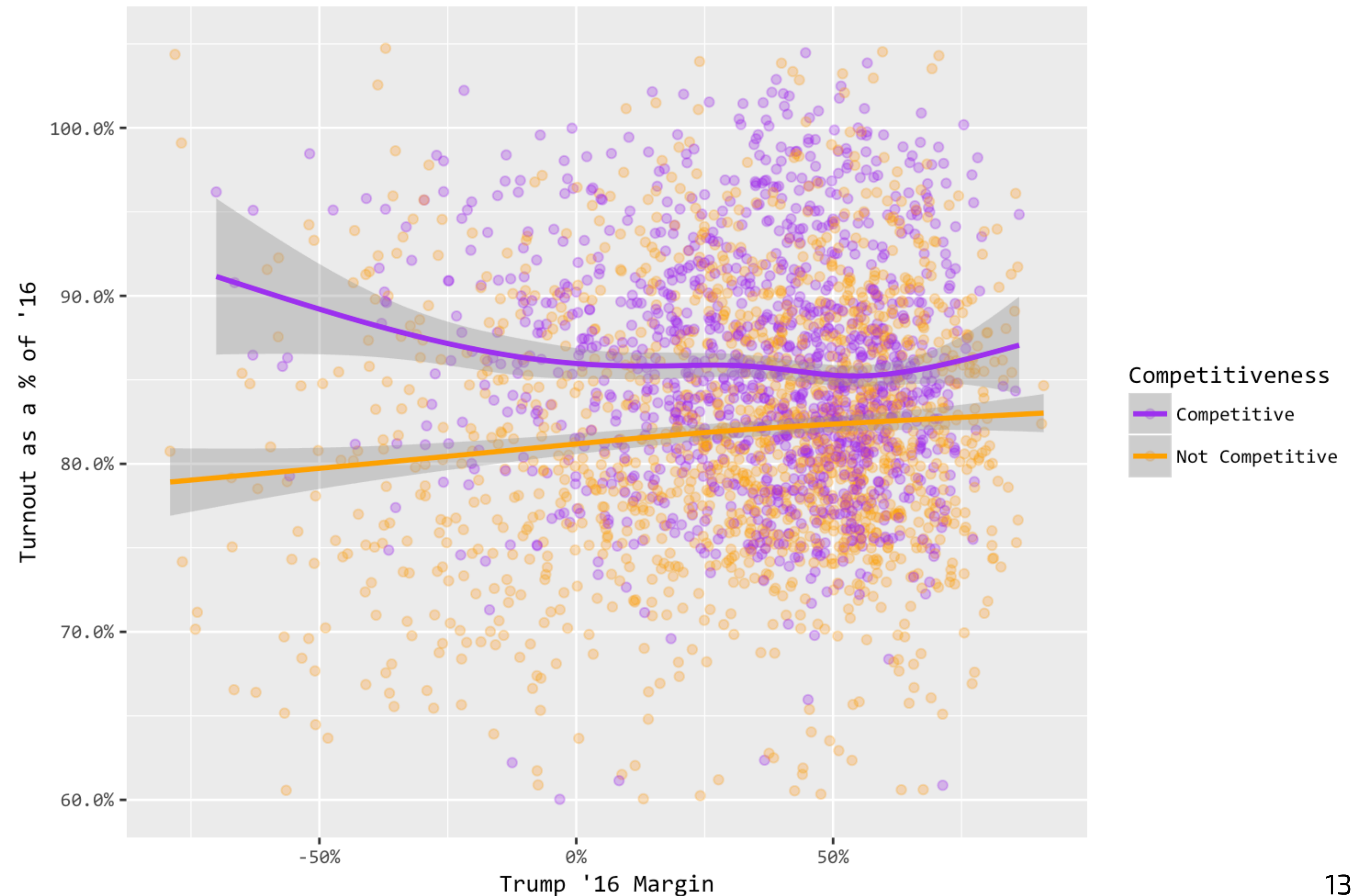


Source: U.S. Elections Project

Democrats Held the Turnout Advantage in Competitive Races

- In competitive races, turnout trends favored Democrats.
- In non-competitive races, turnout (vs. '16) was slightly higher in Trump counties than Clinton counties.

2018 County Turnout: Competitive vs. Non-Competitive Counties

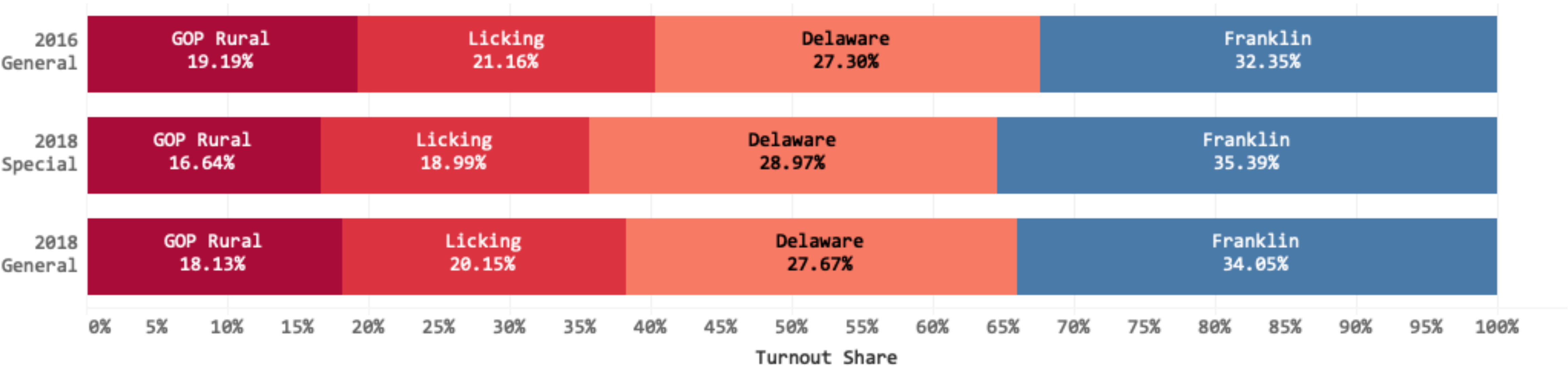


Source: DecisionDeskHQ

But Democratic Turnout Didn't Beat Special Elections

Suburbs and the Democratic base made up more of the vote than they did in 2016, but didn't quite match their performance in most of the special elections. In OH-12, strongly Republican counties outperformed from the August special election while still falling short of their 2016 share of the overall vote.

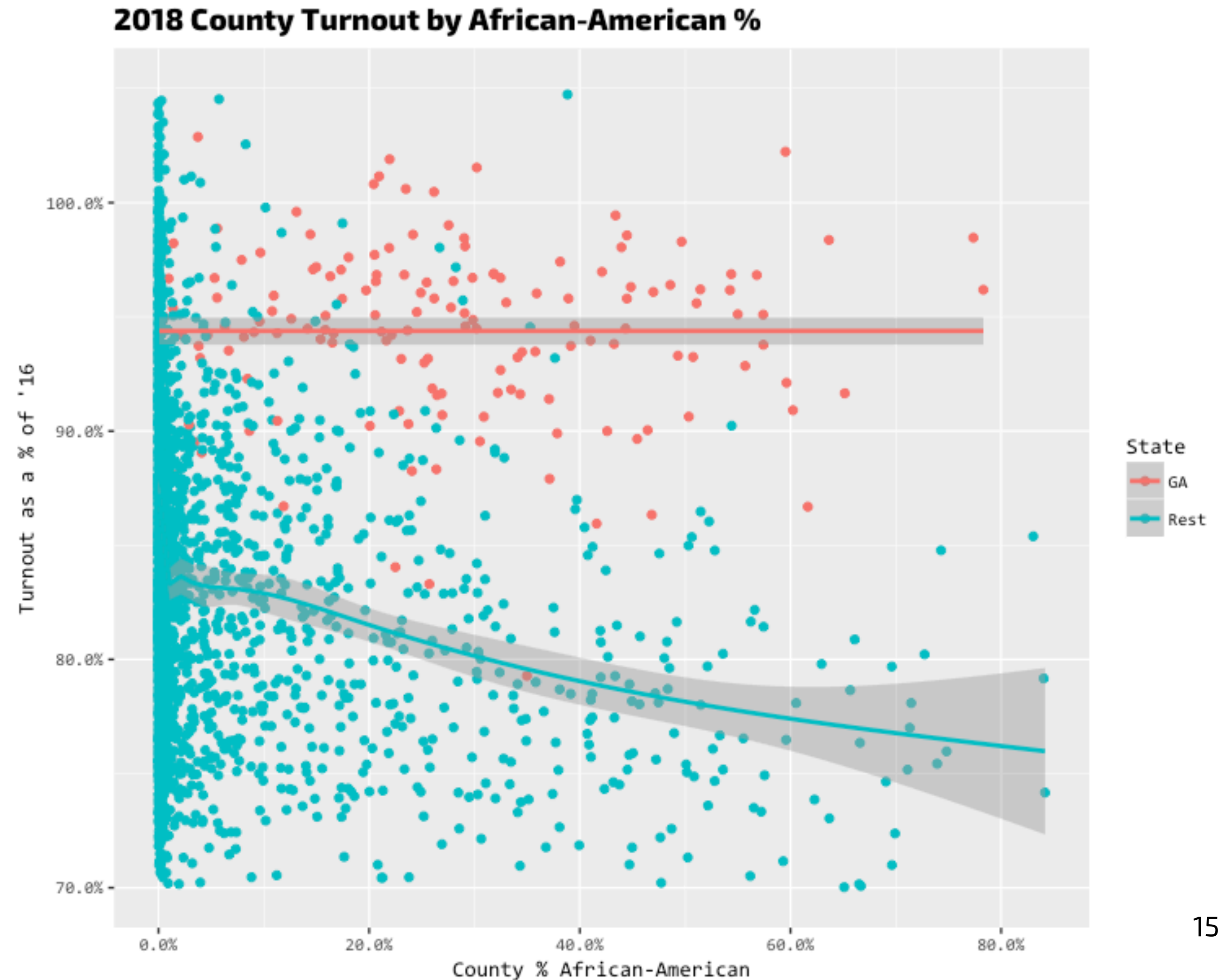
OH-12 County Turnout Share



Source: AP

Black Turnout in Georgia Nearly Matched Presidential Levels

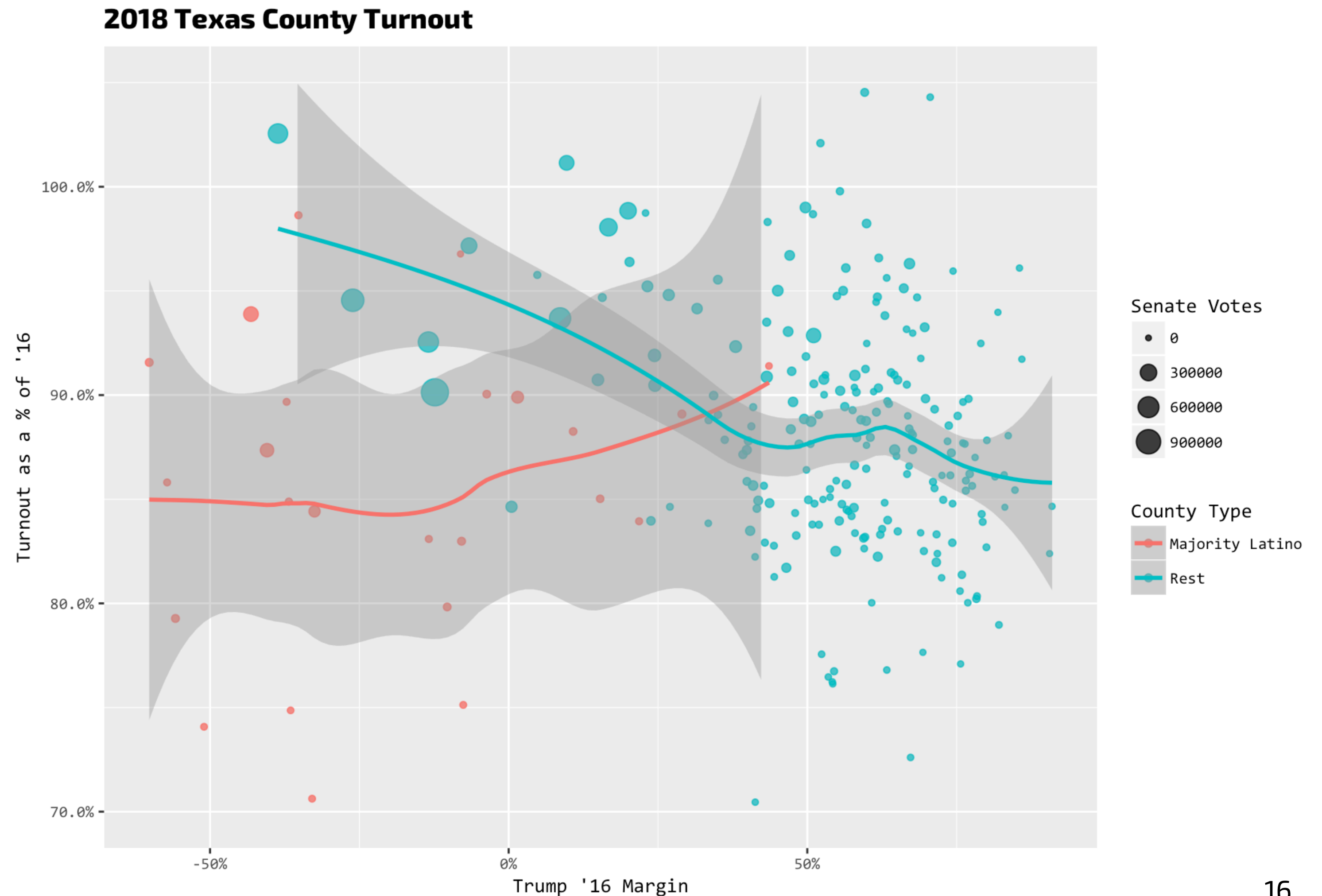
- Some trends were state-specific.
- The Brian Kemp-Stacey Abrams race saw near-Presidential turnout.
- While turnout was off in heavily African-American counties nationally, in Georgia it matched turnout in majority-white counties — a rarity for a midterm.



Source: DecisionDeskHQ & US Census

While Urban Turnout Helped Democrats in Texas

- Turnout in urban, more Democratic-leaning Texas counties raced ahead of more smaller, more Republican counties — nearly matching '16 levels.
- But this Democratic turnout surge wasn't matched in majority Latino South Texas counties.



Source: DecisionDeskHQ & US Census



ECHELON
INSIGHTS

